



USER MANUAL
LED wall and ceiling light
 Cala, Cala + senzor



Before installing the luminaire, please read the instructions carefully

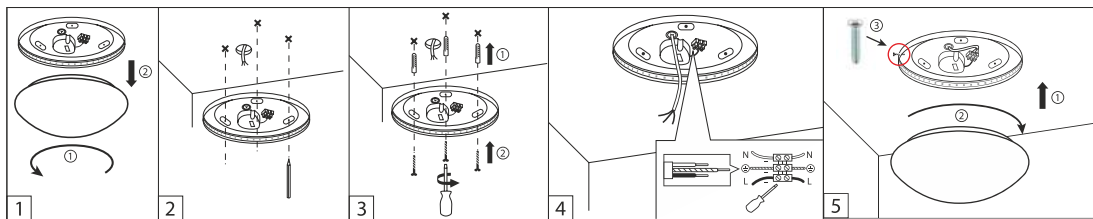


WARNING:



Disconnect the power supply before connecting the supply wires to the luminaire.
 Installation and servicing must be carried out by qualified personnel only.
 Failure to follow these warnings may result in serious injury, fire, or damage to the luminaire.
 The luminaire is designed for operation at 230 VAC. Other voltages may damage or destroy the luminaire.
 The luminaire has an IP 44 rating. Suitable for humid environments.
 Warranty does not cover damage caused by incorrect installation.

INSTALLATION:



Disconnect the power supply before installation.
 The power supply wires should be 10–15 cm long.

- Step 1: To remove the plastic cover, turn it counterclockwise.
- Step 2: Place the base of the luminaire at the installation site and mark the mounting holes on the surface.
- Step 3: Drill holes (Ø 6 mm) and secure the luminaire using the wall plugs and screws included in the package.
- Step 4: Connect the power supply wires to the plastic terminal block on the base of the luminaire.
- Step 5: Attach the plastic cover by turning it clockwise.

After completing the installation, turn on the power supply. Use the switch to turn on the luminaire and check functionality.

MOTION SENSOR SETTINGS AND FUNCTIONS (if the luminaire is equipped – TARA + sensor):

Recommended height for wall mounting: 1–1.8 m
 Recommended height for ceiling mounting: 2.5–6 m

The detection angle of the sensor is 150° when wall-mounted, and 360° when ceiling-mounted.
 By setting the DIP switch combination, the sensor will be precisely adjusted for the given situation.

A)

		1	2	3	
ON ↑	I	ON	ON	ON	100%
	II	-	ON	ON	75%
	III	ON	-	ON	50%
	IV	-	-	ON	25%
	V	-	-	-	10%

A) Detection Zone: Use DIP switches 1, 2, and 3 to adjust the motion sensor's detection zone – see table A for settings.

B)

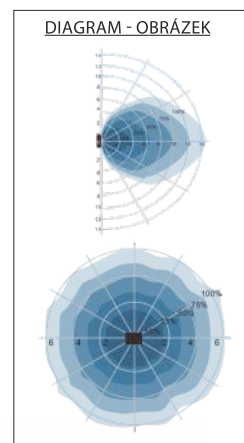
		4	5	6	
ON ↑	I	ON	ON	ON	5s
	II	-	ON	ON	30s
	III	ON	-	ON	90s
	IV	-	-	ON	3min
	V	ON	ON	-	20min
	VI	-	-	-	30min

B) Light Duration Setting: Use DIP switches 4, 5, and 6 to set the light duration after motion detection – see table B for settings. C) Daylight Sensor: Use DIP switches 7, 8, and 9 to set the sensor's sensitivity to ambient light – see table

C)

		7	8	9	
ON ↑	I	ON	ON	ON	2lux
	II	ON	ON	-	10lux
	III	-	ON	-	30lux
	IV	ON	-	-	50lux
	V	-	-	-	deaktiv.

C) for settings. If the ambient light intensity does not drop below the values set on the sensor, the luminaire will not turn on when motion is detected. When the switch is set to “-”, the luminaire will turn on with any detected motion, regardless of ambient light intensity.





McLED WarrantyMcLED s.r.o. provides a 3-year warranty on LED luminaires. In the event of a claim, the buyer is entitled to reimbursement of reasonably incurred costs related to the claim only for transportation costs, which must be pre-approved by the seller. To assess the validity of the claim, the manufacturer must always have the opportunity to verify the correct installation of the LED luminaire directly at the installation site.

MAINTENANCE

Maintenance and repairs must be carried out in a de-energized state.

CLEANING

The luminaire can be cleaned with standard cleaning agents. Do not use abrasive cleaning agents (powders) or solvents. Clean the polished surface of the reflector with a brush dipped in an alcohol-based cleaner.

WARRANTY

According to the valid general business conditions of ELEKTRO–LUMEN, s. r. o., the warranty on the supplied goods, except for batteries for emergency power sources, is 24 months from the date of receipt. The warranty on batteries for emergency power sources is 6 months from the date of receipt, provided that proper battery formatting has been carried out. This does not apply to contractual warranties.

SAFETY AND HEALTH PROTECTION AT WORK (BOZP)

When installing and working with the luminaire, follow the safety and health protection rules at work. Possible risks include: working at heights, falling small objects and shavings, sharp edges, electric shock, etc. Basic protective equipment to be used according to the situation and tools used: work clothes and shoes, protective goggles, safety helmet, protective gloves, reflective vest, and hearing protection (not provided by ELEKTRO–LUMEN, s. r. o.).

NOTICE

The photos in the installation manual are for illustrative purposes only. Installation and electrical connection must be carried out by personnel with electrotechnical qualifications according to Decree 50/78 Coll. Luminaires can only be operated if they are undamaged and clean. The manufacturer accepts no responsibility if the product has been modified or improperly installed. Installation and use must be in accordance with the general Technical requirements, which are publicly available on the website: <http://el-lumen.cz/o-spolecnosti/dokumenty/>

DISCLAIMER

Changes without prior notice reserved. Errors and omissions excepted. Always make sure you are using the latest version of the installation manual (available at www.el-lumen.cz).

ELEKTRO–LUMEN, s. r. o.
Hranická 505,
753 61 Hranice IV
Czech Republic

The company reserves the right to change technical data and printing errors.
Copyright © ELEKTRO–LUMEN, s. r. o.

